
PARTS MANUAL
ver. 1.1
PMHB50ENG.051011

HYDRAULIC BREAKER
HAMMER HB 50 J
HAMMER HB 50 L
HAMMER HB 50 U

Serial No.
TRK500005-UP
TRK510005-UP
TRK520005-UP

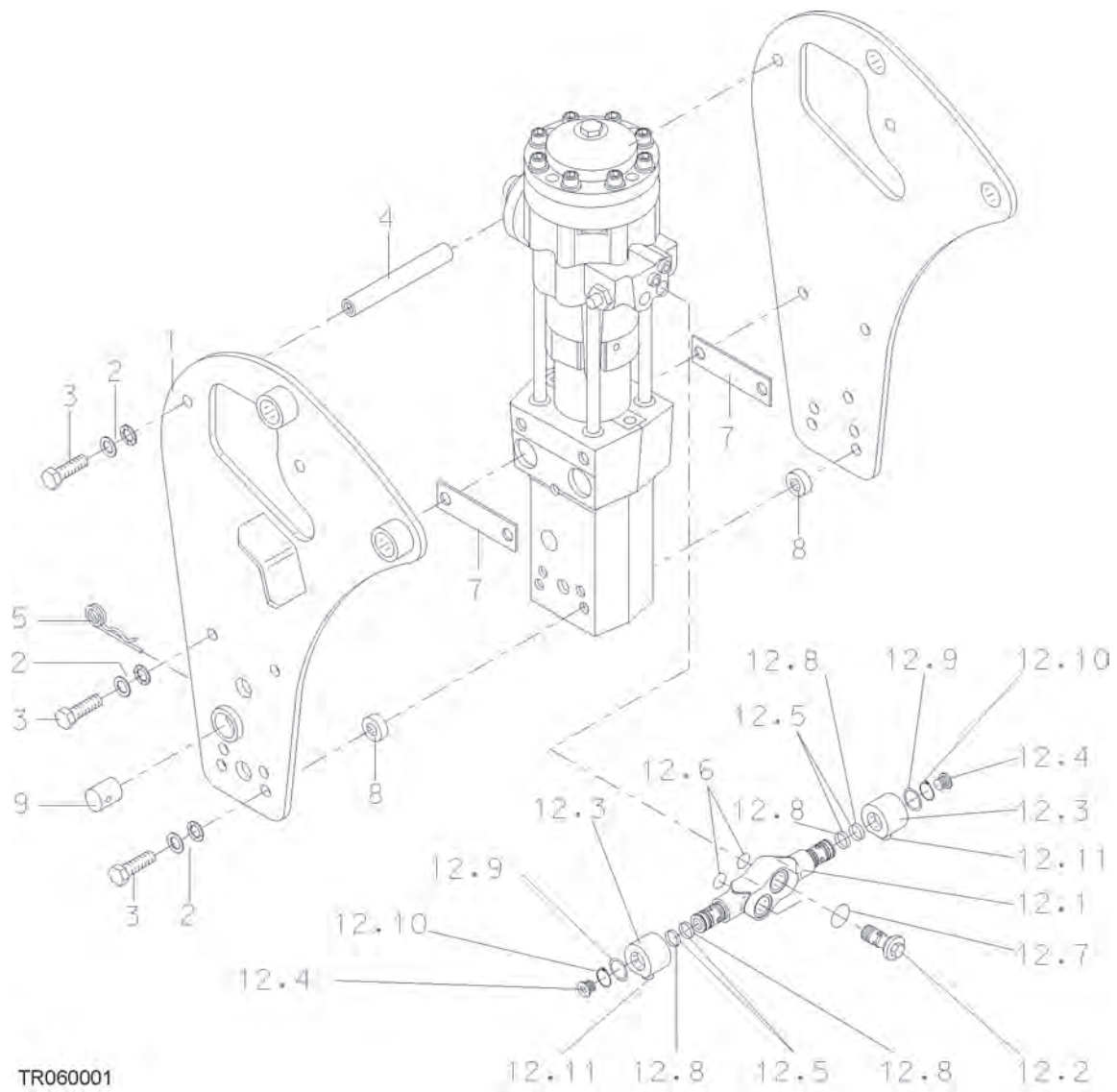
TABLE OF CONTENTS

1. Housing unit 50J	4
2. Housing unit 50L	6
3. Housing unit 50U.....	8
4. Low pressure accumulator	10
5. High pressure accumulator	11
6. Pressure adjusting valve	12
7. Tie rod	13
8. Valve body and distributor	14
9. Cylinder and piston.....	16
10. Front head	17
11. Lower tool bushing.....	18
12. Tool	19
13. Seal set	20

PARTS

HOUSING UNIT

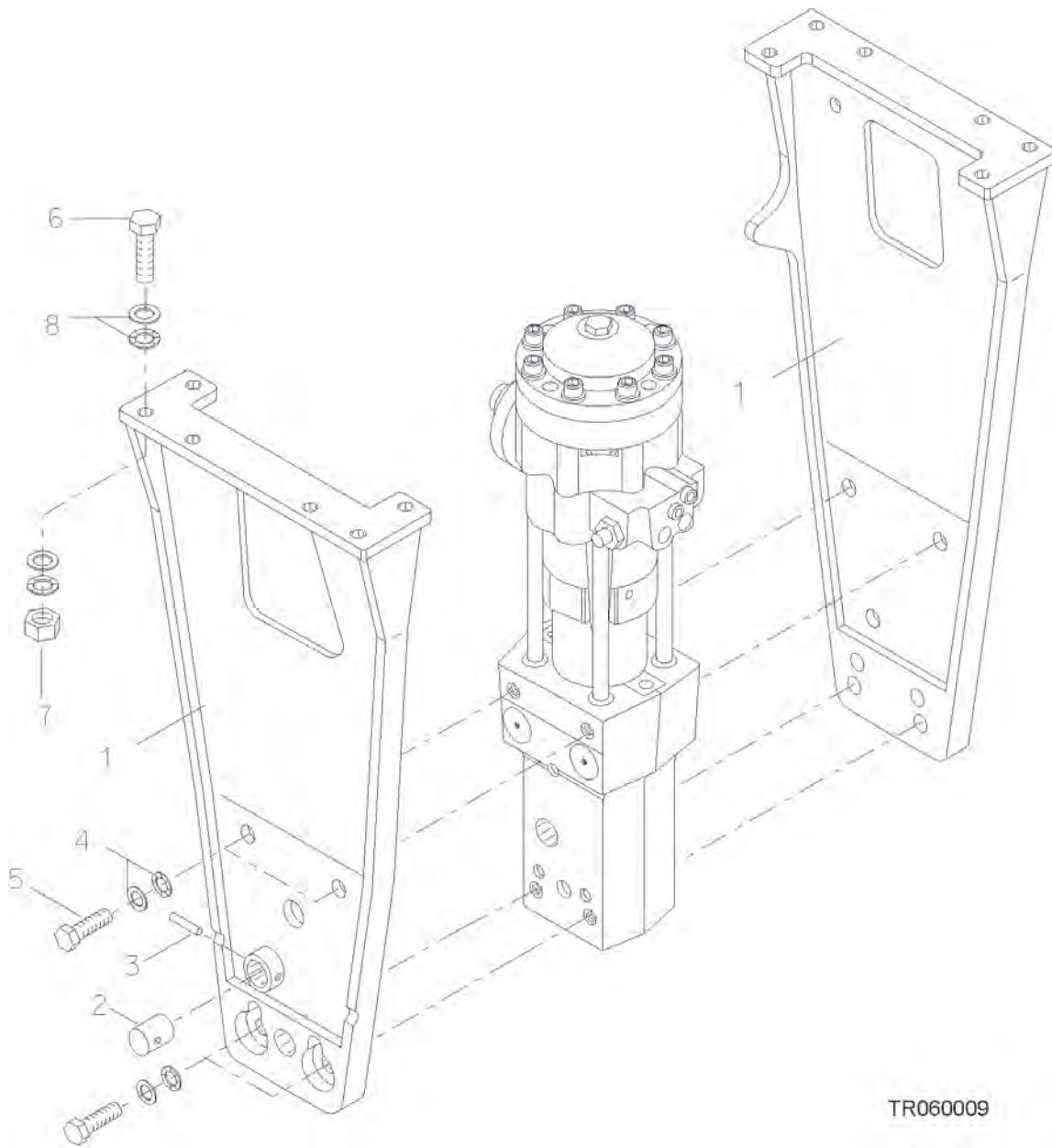
1. HOUSING UNIT



TR060001

Item	Description	Part no.	Specification	Note	Qty
1	Housing plates	H00168244			1
2	Lock washer	H00091038	M24 NORD-LOCK		12
3	Hex. screw	H00902182	M24x70-10.9 ISO 4017		12
4	Spacer tube	H00300881			2
5	R-clip	H00904016			1
7	Spacer plate	H00300882			2
8	Bushing	H00400630			4
9	Buffer	H00042107			1
12	Swivel coupling	H00101178			1
	Incl. parts 12.1-12.11				
12.1	Manifold	H00101177			1
12.2	Connector screw	H00300502			2
12.3	Swivel coupling	H00300505			2
12.4	Flange plug	H00090424	G1/2		2
12.5	O-ring	H00090015	D26		4
12.6	O-ring	H00094022	D28		2
12.7	USIT-ring	H00094063	D34		2
12.8	Support ring	H00912005	D27		4
12.9	Support plate	H00903002	S32x45 DIN 988		2
12.10	Retaining ring	H00905001	32x1.5 DIN 471		2
12.11	Shield plug	H00915043	G3/4		2
21	Safety label set	H00161560			1

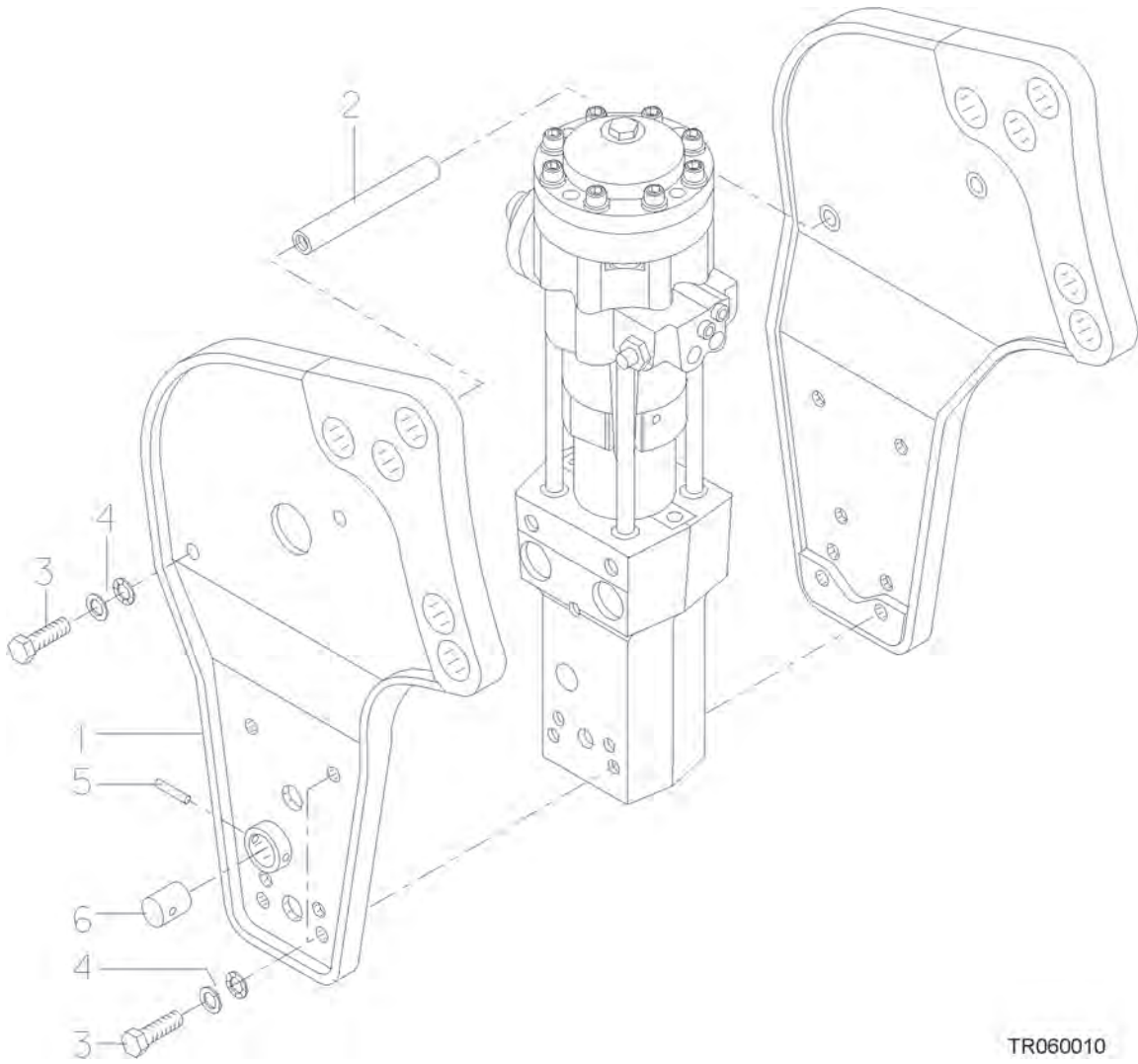
2. HOUSING UNIT



TR060009

Item	Description	Part no.	Specification	Note	Qty
1	Housing plates	H00169436			1
2	Buffer	H00042107			1
3	Split pin	H00090345	10x70 DIN 7343		1
4	Lock washer	H00091038	M24 NORD-LOCK		8
5	Hex. screw	H00901444	M24x60-10.9 DIN 933		8
6	Hex. screw	H00090566	M16x70-8.8 DIN 931		12
7	Hex. nut	H00091000	M16-8 DIN 934		12
8	Lock washer	H00090597	M16 NORD-LOCK		24
21	Safety label set	H00161560			1

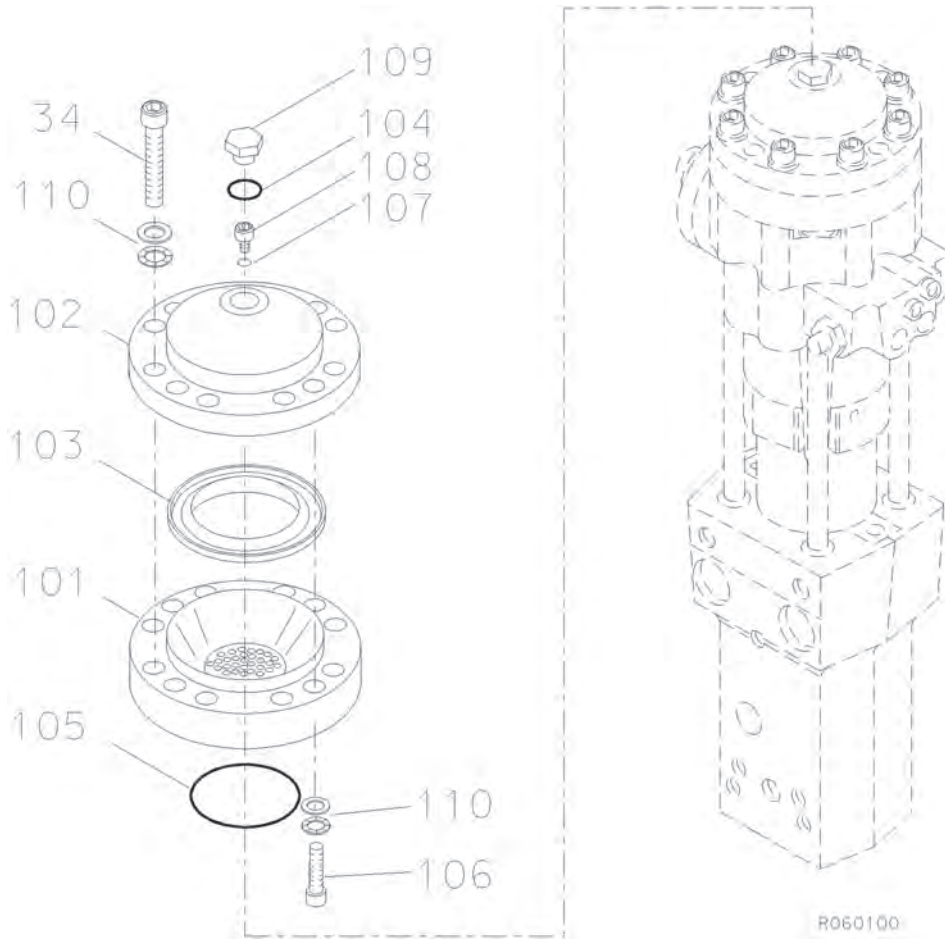
3. HOUSING UNIT



TR060010

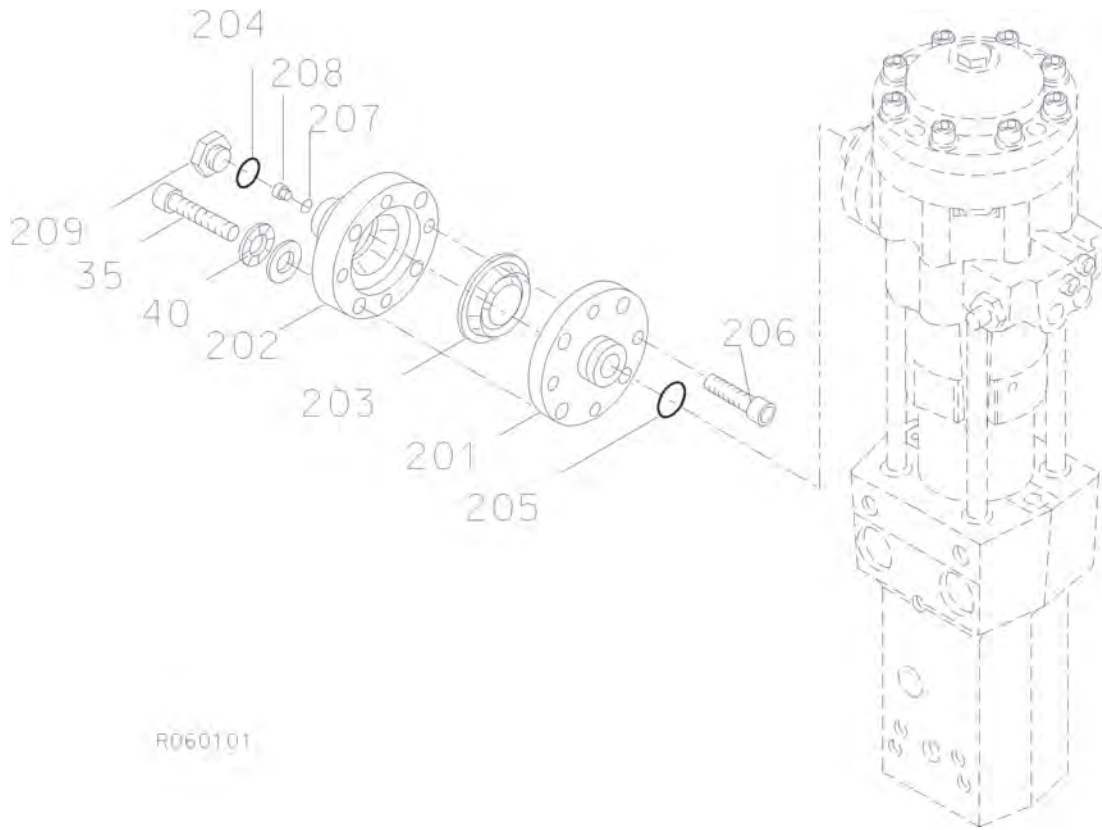
Item	Description	Part no.	Specification	Note	Qty
1	Housing (incl. parts 2-6)	H00170026			1
2	Spacer tube	H00104968			2
3	Hex. screw	H00901444	M24x60-10.9 DIN 933		12
4	Lock washer	H00091038	M24 NORD-LOCK		12
5	Split pin	H00090345	10x70 DIN 7343		1
6	Buffer	H00042107			1
21	Label set (incl. part 21.1)	H00170028			1
21.1	Safety label set	H00169555			1

4. LOW PRESSURE ACCUMULATOR



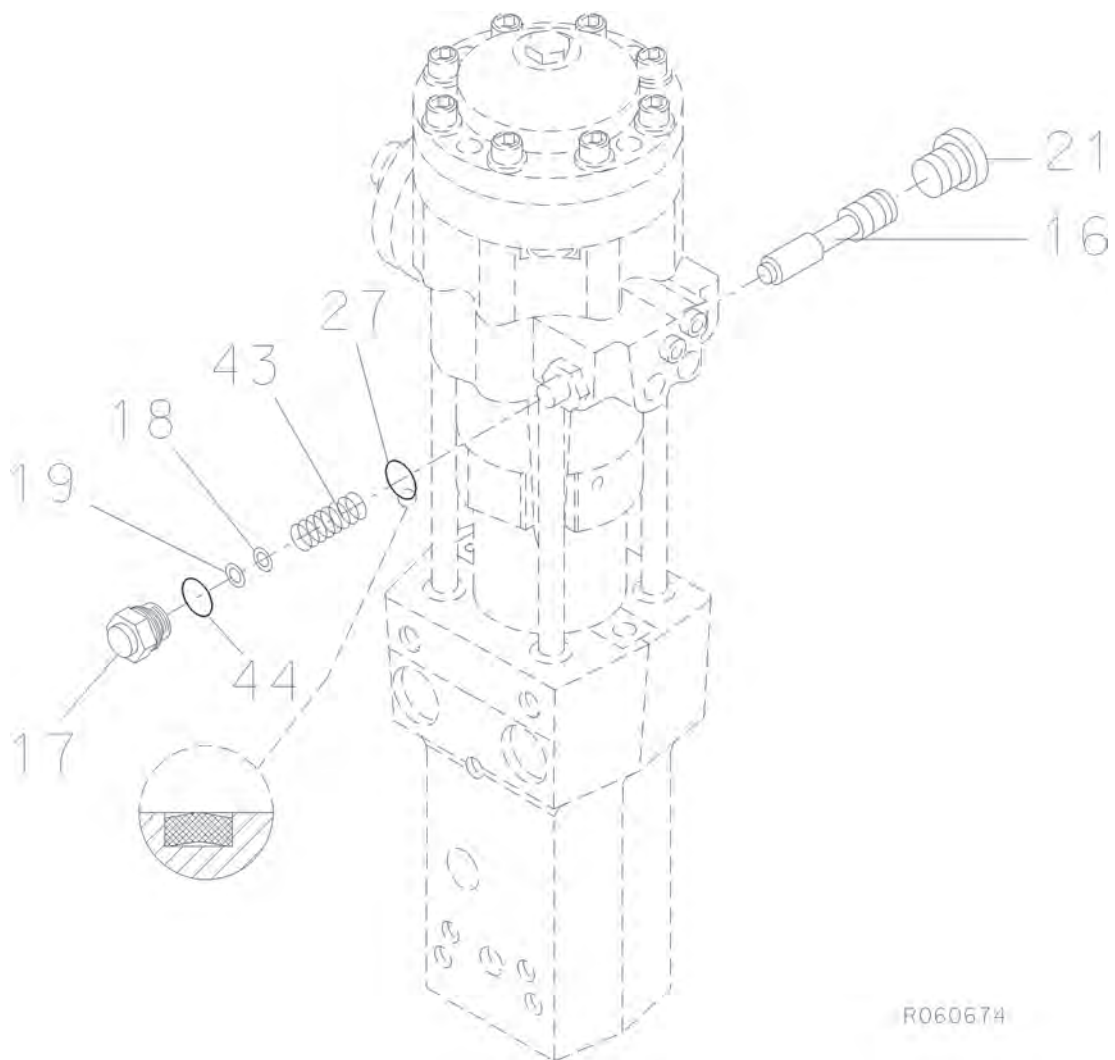
Item	Description	Part no.	Specification	Note	Qty
1	Low pressure accumulator (incl. parts 101-110)	H00300689			1
101	Accumulator bottom	H00200426			1
102	Accumulator cover	H00200428			1
103	Membrane	H00300688			1
104	O-ring	H00910006	D23	*	1
105	O-ring	H00094068	D95	*	1
106	Hex. socket screw	H00900040	M16x80-8.8 DIN 912		4
107	Usit-ring	H00090056	8-13.9-1	*	1
108	Filling plug	H00042074			1
109	Shield plug	H00400300			1
110	Lock washer	H00090597	M16 NORD-LOCK		12
34	Hex. socket screw	H00900003	M16x100-8.8 DIN 912		8
	*) Are included in seal set				

5. HIGH PRESSURE ACCUMULATOR



Item	Description	Part no.	Specification	Note	Qty
2	High pressure accumulator (incl. parts 201-209)	H00300661			1
201	Accumulator bottom	H00300812			1
202	Accumulator cover	H00300813			1
203	Membrane	H00300293			1
204	O-ring	H00910006	D23	*	1
205	O-ring	H00090017	D34	*	1
206	Hex. socket screw	H00900046	M12x35-8.8 DIN 912		4
207	Usit-ring	H00090056	8-13.9-1	*	1
208	Filling plug	H00042074			1
209	Shield plug	H00400300			1
35	Hex. socket screw	H00900040	M16x80-8.8 DIN 912		4
40	Lock washer	H00090597	M16 NORD-LOCK		4
	*) Are included in seal set				

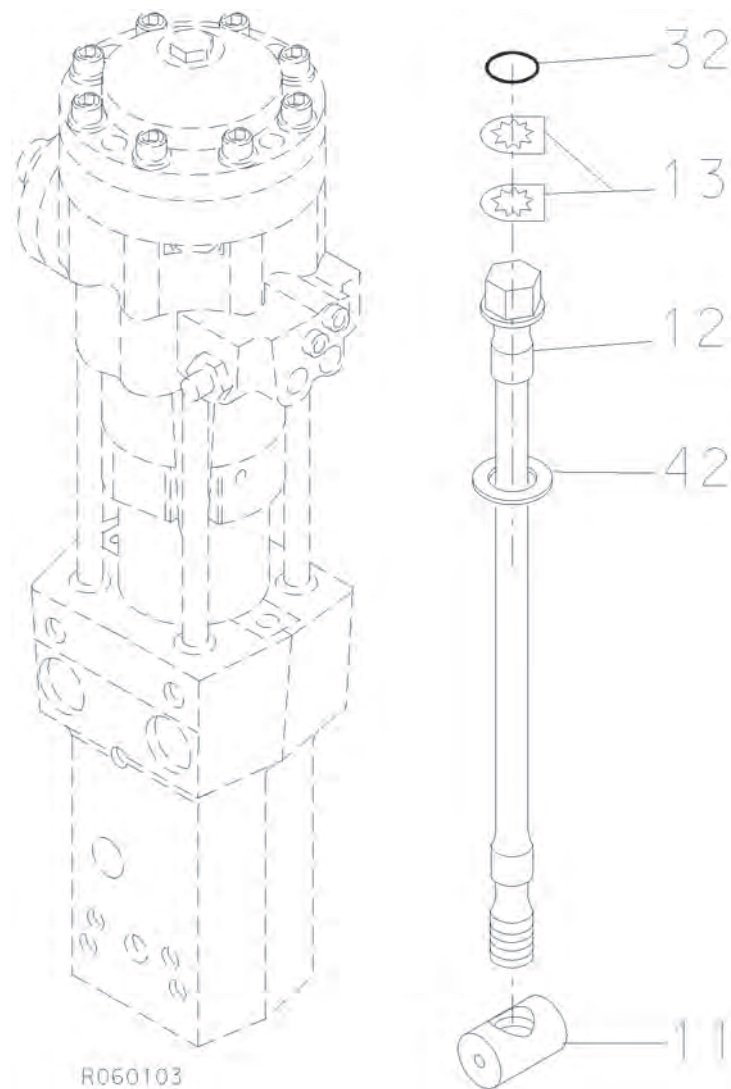
6. PRESSURE ADJUSTING VALVE



R06067#

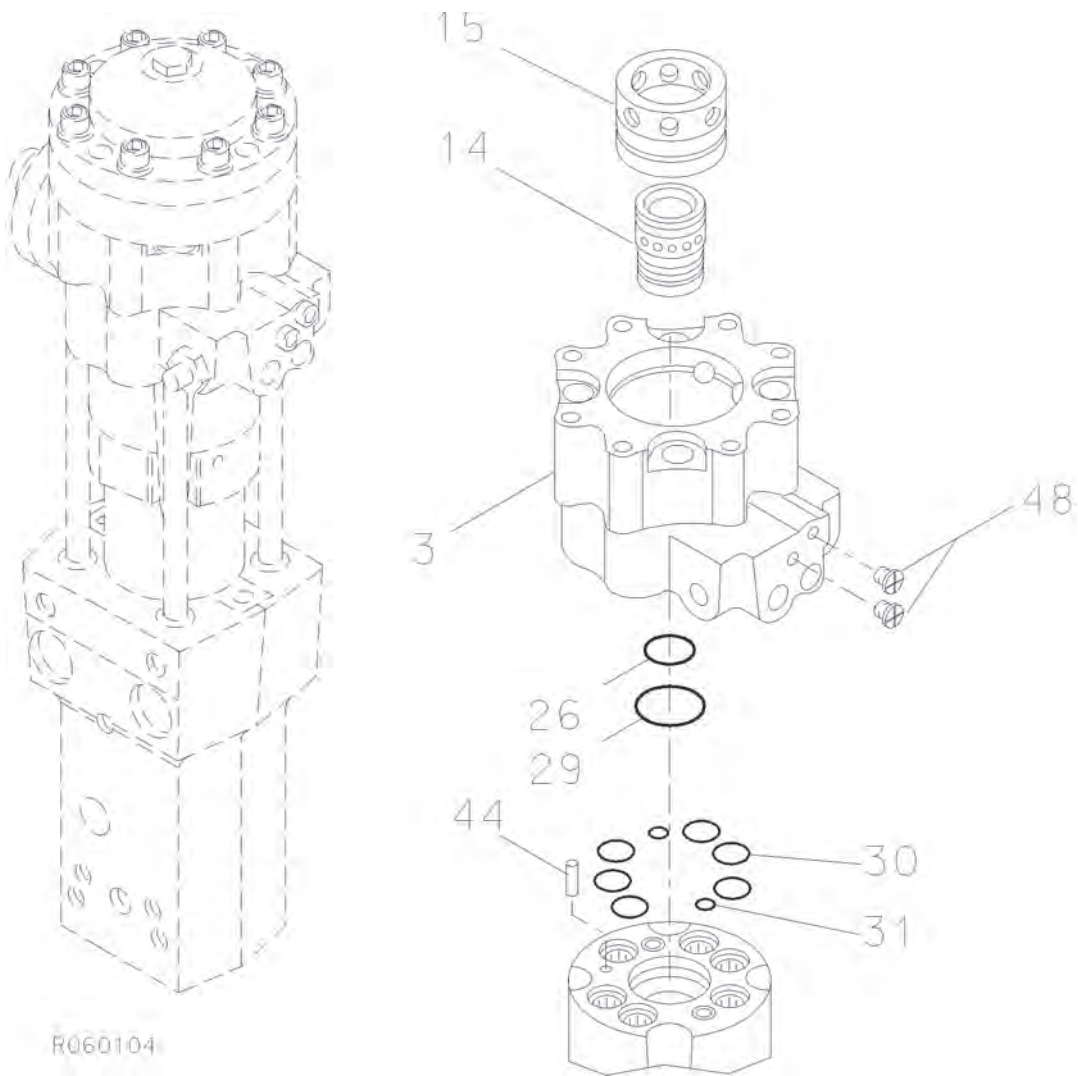
Item	Description	Part no.	Specification	Note	Qty
16	Pressure adjusting spool	H00031579			1
17	Spring housing (incl. part 44)	H00159329			1
18	Shim plate	H00041640			X
19	Shim plate	H00041639	S=0.5		X
21	Flange plug	H00090401	R3/4		1
27	Seal	H00911036	D20	*	1
43	Spring	H00090114			1
44	O-ring	H00090015	D26	*	1
	*) Are included in seal set				

7. TIE ROD



Item	Description	Part no.	Specification	Note	Qty
11	Tie rod nut	H00042006			4
12	Tie rod	H00031578			4
13	Lock plate	H00042007			8
32	O-ring	H00090017	D34	*	4
42	Washer	H00903009	D27		4
	*) Are included in seal set				

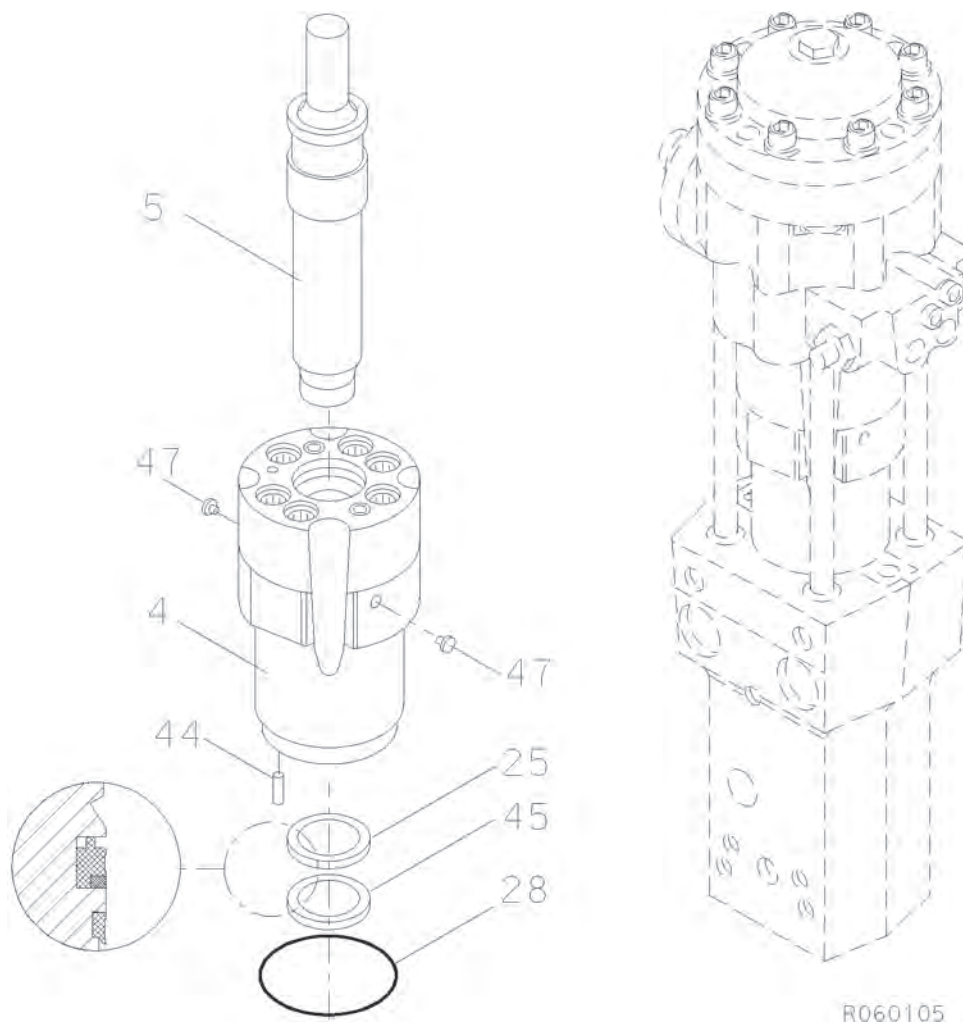
8. VALVE BODY AND DISTRIBUTOR



VALVE BODY AND DISTRIBUTOR

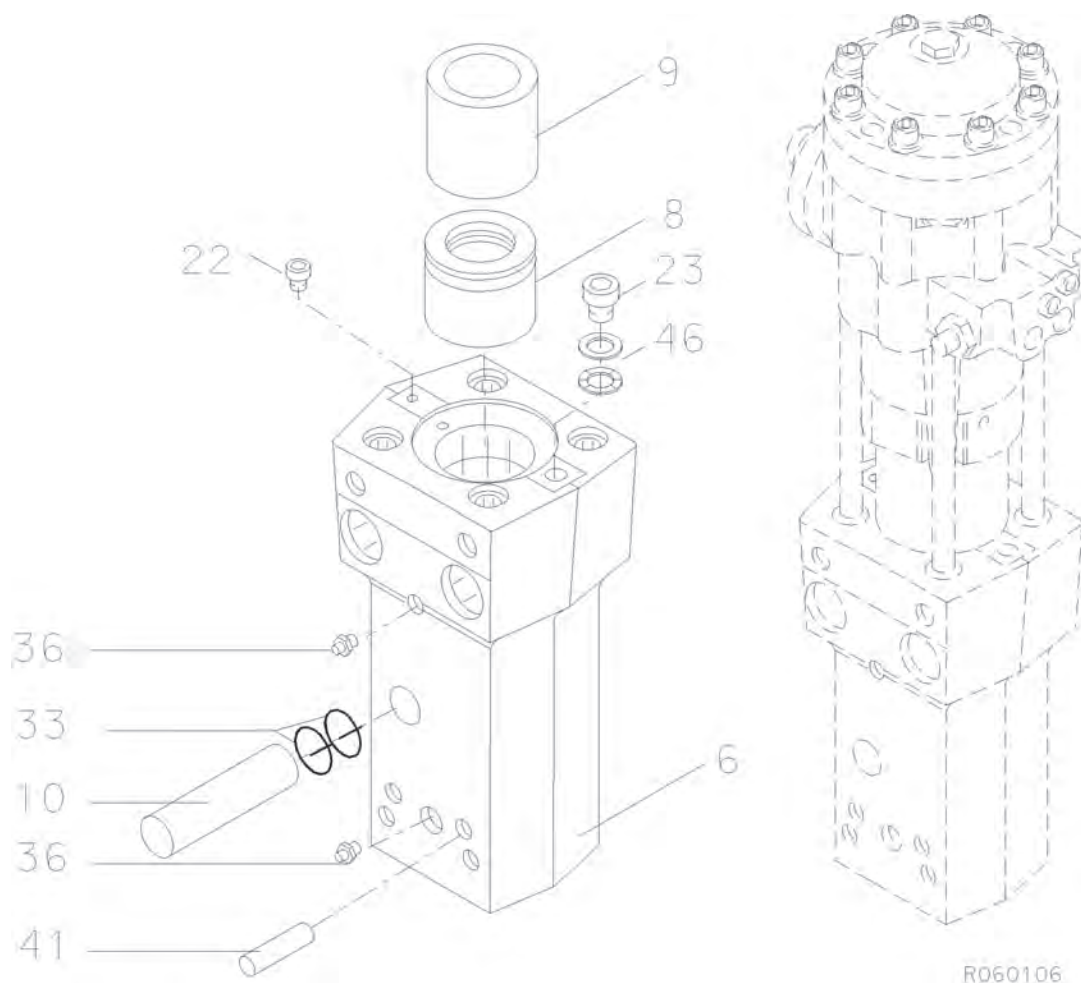
Item	Description	Part no.	Specification	Note	Qty
3	Valve body (incl. part 48)	H00100464			1
14	Distributor	H00103648			1
15	Distributor cover	H00103652			1
26	Seal	H00094117	D36	*	1
29	O-ring	H00090014		*	1
30	O-ring	H00090015	D26	*	6
31	O-ring	H00090011	D14	*	2
44	Parallel pin	H00090357	8m6x24 DIN 6325		1
48	Plug	H00041658			2
	*) Are included in seal set				

9. CYLINDER AND PISTON



Item	Description	Part no.	Specification	Note	Qty
4	Cylinder (incl. part 47)	H00011015			1
5	Piston	H00020924			1
25	Seal	H00094114	D63	*	1
28	O-ring	H00090032	D120	*	1
44	Parallel pin	H00090357	8m6x24 DIN 6325		1
45	Wiper	H00094115	D63	*	1
47	Flange plug	H00093203	BSP 1/8		2
	*) Are included in seal set				

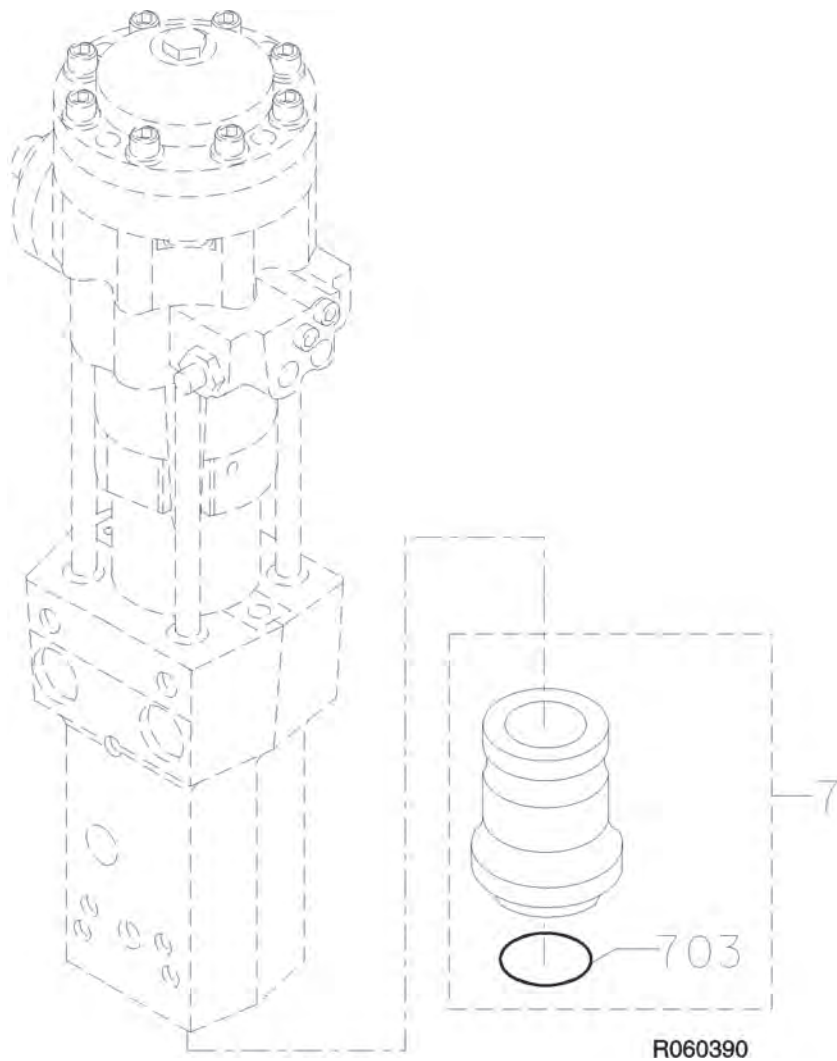
10. FRONT HEAD



R060106

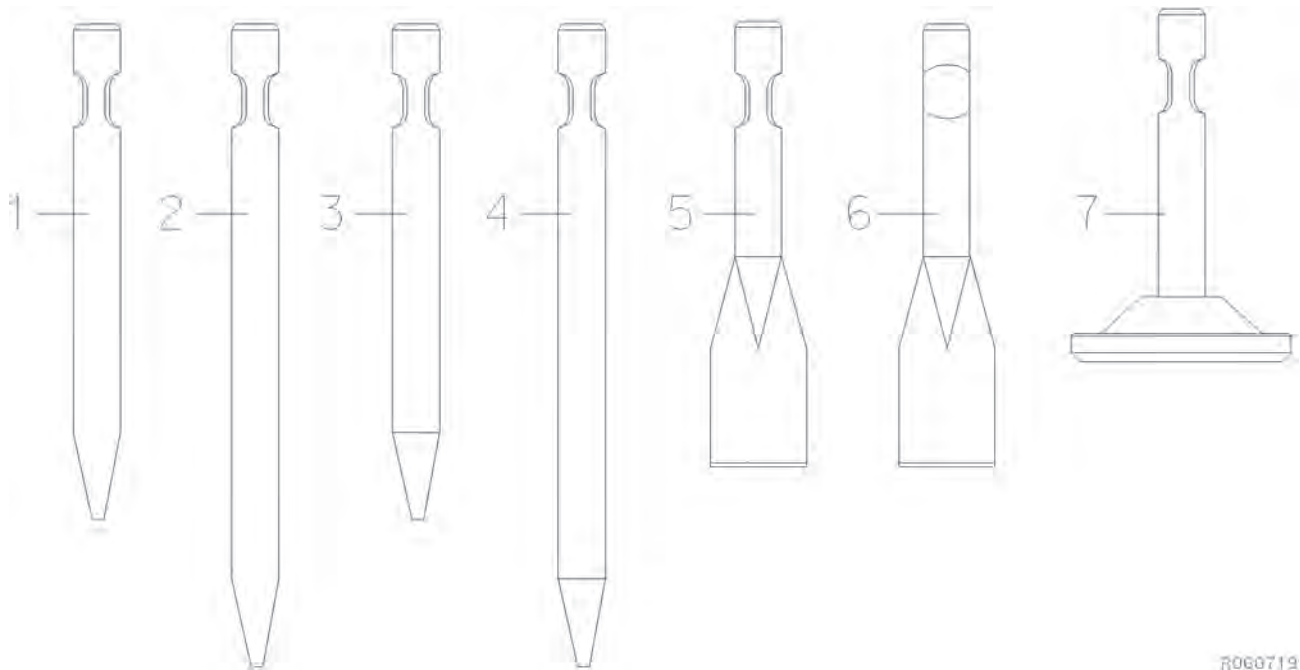
Item	Description	Part no.	Specification	Note	Qty
6	Front head (incl. parts 22, 23, 36 and 46)	H00100341			1
8	Upper tool bushing	H00031576			1
9	Thrust ring	H00300584			1
10	Retaining pin	H00042005	D40		1
22	Flange plug	H00090444	BSP 3/8		1
23	Plug	H00090424	BSP 1/2		1
33	O-ring	H00094091	D39	*	2
36	Grease nipple	H00090201	BSP 1/8		2
41	Split pin	H00904007	21x100 DIN 1481		2
46	Lock washer	H00091010	M20 NORD-LOCK		1
	*) Are included in seal set				

11. LOWER TOOL BUSHING



Item	Description	Part no.	Specification	Note	Qty
7	Lower tool bushing (incl. part 703)	H00400447			1
703	Seal	H00911032	D63	*	1
	*) Are included in seal set				

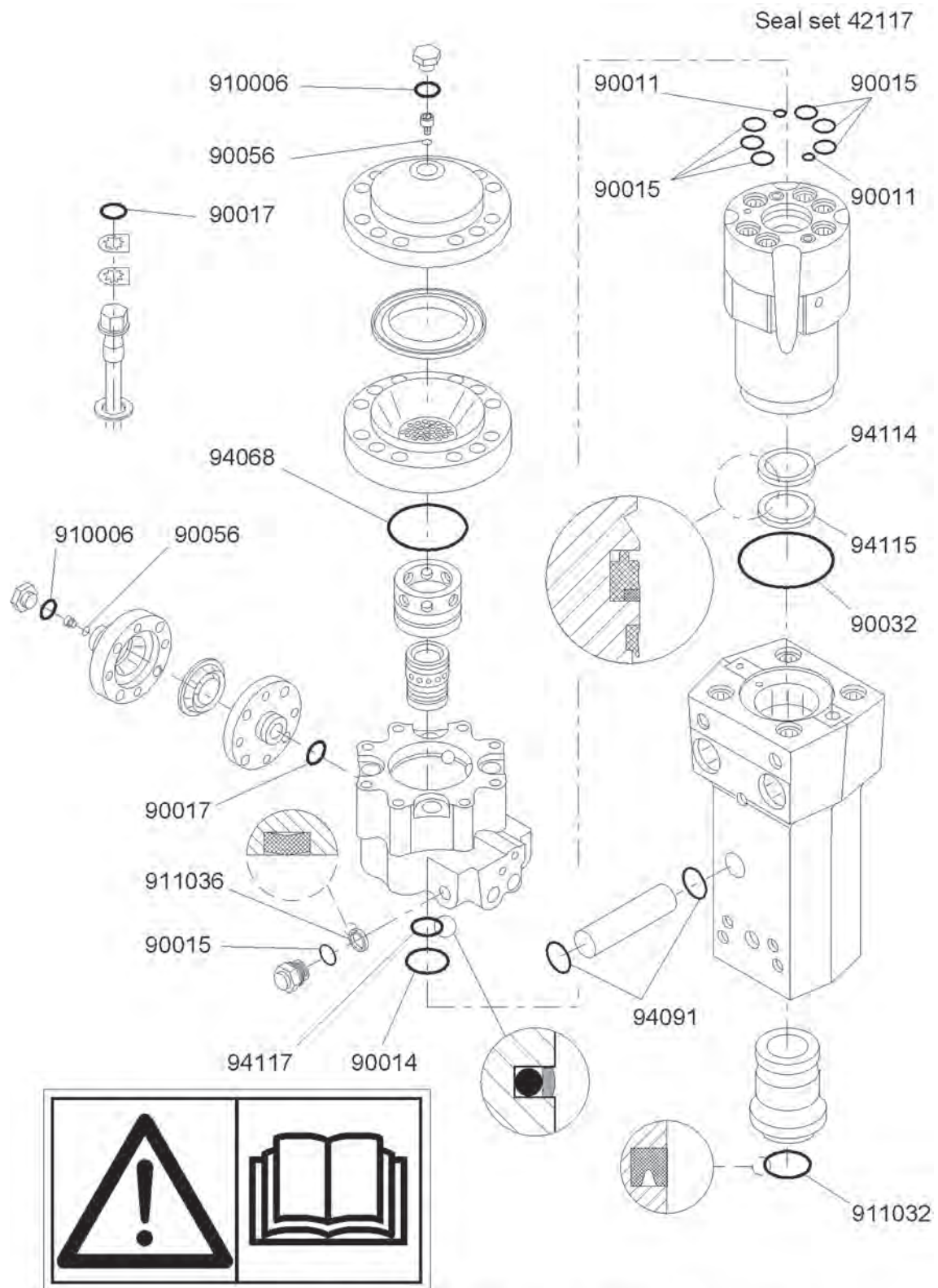
12. TOOL



R060719

Item	Description	Part no.	Specification	Note	Qty
1	Chisel	H00000231	L = 680 mm, W = 15 kg, D = 63 mm		1
2	Long Chisel	H00000232	L = 780 mm, W = 18 kg, D = 63 mm		1
3	Moil point	H00000233	L = 680 mm, W = 15 kg, D = 63 mm		1
4	Long moil point	H00000238	L = 780 mm, W = 18 kg, D = 63 mm		1
5	Spade, parallel to boom	H00000235	L = 570 mm, W = 12.8 kg, Width = 130 mm		1
6	Spade, transverse to boom	H00000236	L = 570 mm, W = 12.8 kg, Width = 130 mm		1
7	Compacting plate	H00000237	L = 570 mm, W = 30 kg, Plate D = 250 mm		1

13. SEAL SET



This summary only indicates the position of the seals. It must NOT be used as assembly instruction. Read the manual.

R060864

Item	Description	Part no.	Specification	Note	Qty
Kit	Seal set (incl. parts 1-14)	H00042117			
1	Seal	H00094114	D63		
2	Seal	H00094117	D36		
3	Seal	H00911036	D20		
4	Wiper	H00094115	D63		
5	O-ring	H00090032	D120		
6	O-ring	H00094068	D95		
7	O-ring	H00090014	D65		
8	O-ring	H00090017	D34		5
9	O-ring	H00090015	D26		7
10	O-ring	H00090011	D14		2
11	Usit-ring	H00090056	8-13.9-1		2
12	O-ring	H00910006	D23		2
13	O-ring	H00094091	D39		2
14	Seal	H00911032	D63		1

